



Alberta Elk Commission Hard Antler Scoring Form

LIDA Tag #: L: _____ R: _____ Competition Tag #/Colour: _____

Animal Registration #: _____ Sheds: _____ Cut-Offs: _____ Skull Plate: _____

	Left Antler	Right Antler
Length of Main Beam	/8	/8

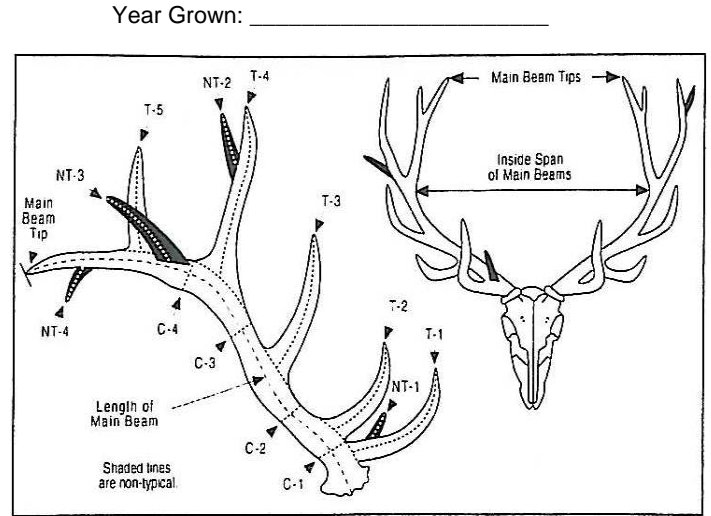
	Left Antler	Right Antler
Length of Typical Tines	/8	/8
T-1	/8	/8
T-2	/8	/8
T-3	/8	/8
T-4	/8	/8
T-5	/8	/8
T-6	/8	/8
T-7	/8	/8
T-8	/8	/8
T-9	/8	/8
Sub-Total Typical Tines	/8	/8

	Left Antler	Right Antler
Length of Non-Typical Tines	/8	/8
NT-1	/8	/8
NT-2	/8	/8
NT-3	/8	/8
NT-4	/8	/8
NT-5	/8	/8
NT-6	/8	/8
NT-7	/8	/8
NT-8	/8	/8
NT-9	/8	/8
Sub-Total Non-Typical Tines	/8	/8

	Left Antler	Right Antler
Circumference of Main Beam	/8	/8
C-1	/8	/8
C-2	/8	/8
C-3	/8	/8
C-4	/8	/8
Sub-Total Circumference Points	/8	/8

Spread Credit:

Main Beam Total Length	/8
Main Beam Total Length x .4032	/8
Total Score	/8



Total Number of Points: L _____ R _____
All Tines plus beam Tip

Typical Total = /8
3% of Typical Measurement = /8

Non-Typical Total = /8

Inside Span of Main Beams /8

Notes: _____

Measurer Signature: _____ Print Name: _____

Date: _____ Judge's Signature: _____

NOTE: Statisticians will not accept forms without Measurer's and Judge's Signature